



# 54 New Coventry Road, Sheldon

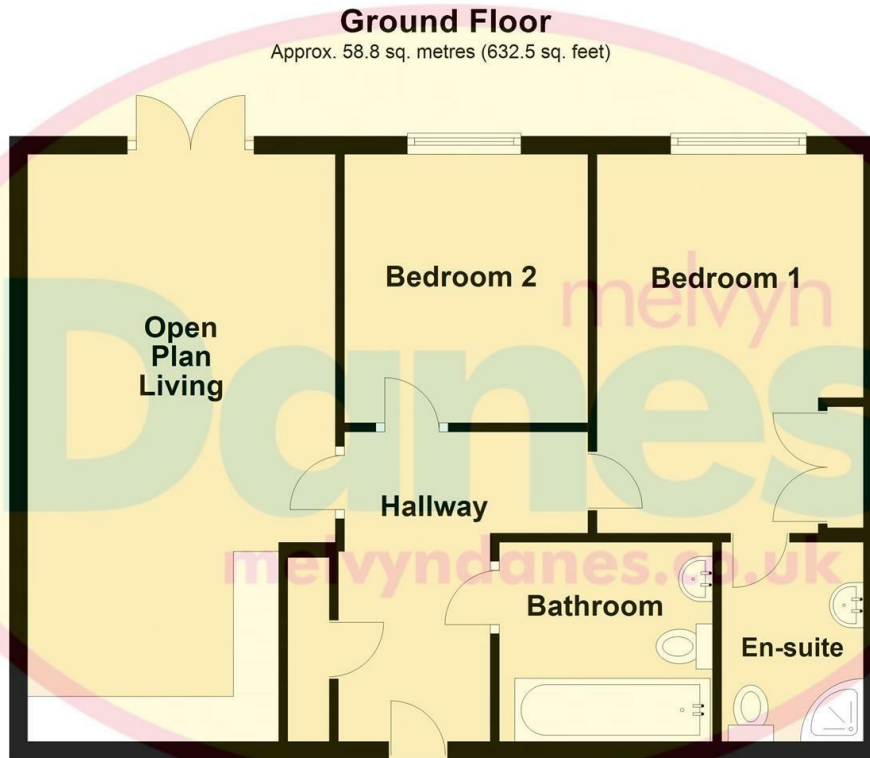
## £950 Per Month

- MODERN SECOND FLOOR APARTMENT
- OPEN PLAN LOUNGE/KITCHEN
- EN-SUITE SHOWER ROOM
- DOUBLE GLAZING
- FURNISHED
- ONE ALLOCATED PARKING SPACE
- TWO BEDROOMS
- BATHROOM
- ELECTRIC HEATING



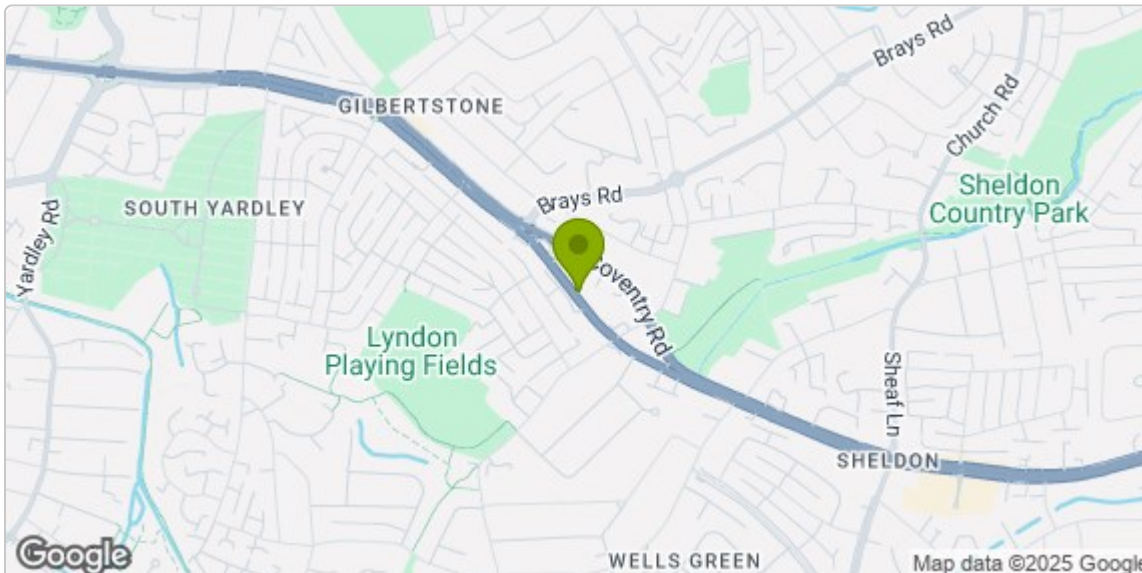
## FLOOR PLAN

Please note that all measurements and floor plans are approximate and quoted for general guidance only and whilst every attempt has been made to ensure accuracy, they must not be relied on and do not form part of any contract.



Total area: approx. 58.8 sq. metres (632.5 sq. feet)

**COUNCIL TAX BAND: B**



**Full Postal Address:**  
53 Solihull Heights 54 New  
Coventry Road Sheldon  
Birmingham B26 3BB

**Council Tax Band:**

Energy Efficiency Rating		Current	Potential
Very energy efficient - lower running costs			
(92 plus)	A		
(81-91)	B		85
(69-80)	C	73	
(55-68)	D		
(39-54)	E		
(21-38)	F		
(1-20)	G		
Not energy efficient - higher running costs			
England & Wales		EU Directive 2002/91/EC	