



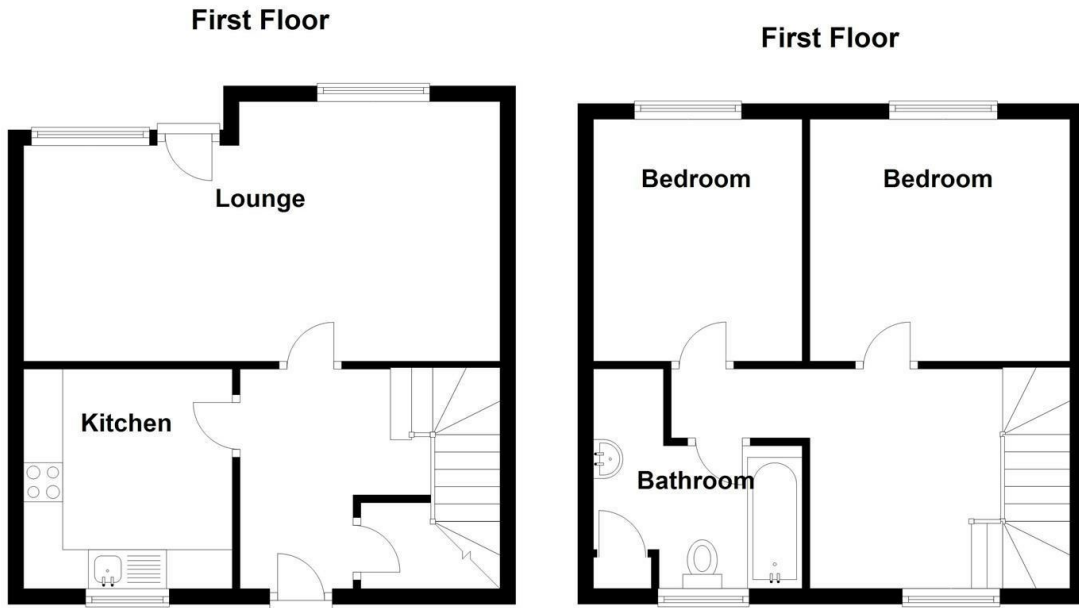
# Stratford Road, Shirley

## £850 Per Month



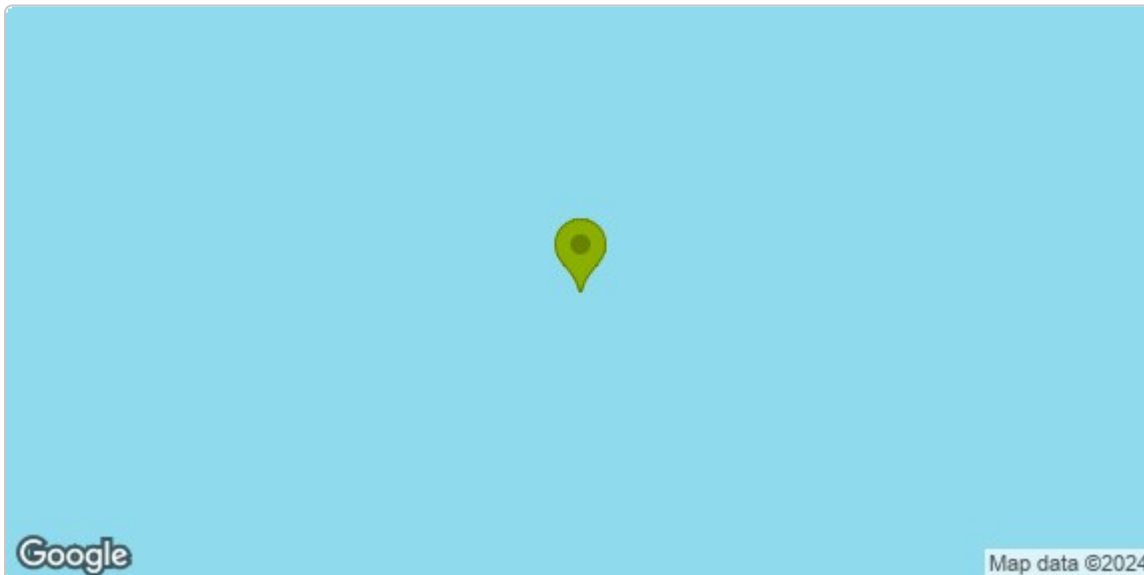
## FLOOR PLAN

Please note that all measurements and floor plans are approximate and quoted for general guidance only and whilst every attempt has been made to ensure accuracy, they must not be relied on and do not form part of any contract.



Total area: approx. 73.2 sq. metres (787.4 sq. feet)

Council tax band - Currently waiting for Solihull Council to confirm, but previously has been band A



Full Postal Address:  
407a Stratford Road Shirley  
Solihull B90 4AA

Council Tax Band:

Energy Efficiency Rating		
	Current	Potential
Very energy efficient - lower running costs		
(92 plus) <b>A</b>		
(81-91) <b>B</b>		
(69-80) <b>C</b>		71
(55-68) <b>D</b>		
(39-54) <b>E</b>	40	
(21-38) <b>F</b>		
(1-20) <b>G</b>		
Not energy efficient - higher running costs		
England & Wales	EU Directive 2002/91/EC	